

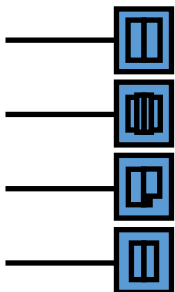


## MOVING UP TO YEAR 7



**PRINCIPAL:**

Mr M Hicks



01302 562541

[www.ashhillacademy.org.uk](http://www.ashhillacademy.org.uk)

[info@ashhillacademy.org.uk](mailto:info@ashhillacademy.org.uk)

Ash Hill Road, Hatfield DN7 6JH





# PRINCIPAL'S WELCOME

## Welcome to Ash Hill Academy



I am delighted to see that you are on the list of students we will welcome to Ash Hill Academy in September 2023. I wish you a very warm welcome.

Moving up to secondary school is a significant step in your journey to becoming a young adult, but it shouldn't be a leap into the unknown. You can be sure that at Ash Hill Academy we will set you firmly on the path towards outstanding GCSE results, a wide range of personal development opportunities and onto a lifetime of success.

Ash Hill Academy is an inspirational place to learn, we have state of the art facilities including a new sports development which will open in January 2024. At Ash Hill Academy we have high expectations of both students and staff. We are proud of the achievements of our students both in terms of examination results and their wider successes. We will do everything we can to provide you with a happy and fulfilling school life which will underpin your future achievements.

We aim to ensure that the transition process from primary to high school runs as smoothly as possible and minimise any disruption or anxiety for you and your parents. I hope this booklet will help you with the next phase of your learning journey.

We encourage you and your family to keep up to date with information on celebrations, events and news at Ash Hill Academy. An excellent way of doing this is via our school website [www.ashhillacademy.org.uk](http://www.ashhillacademy.org.uk) and social media pages on Twitter @AshHillAcademy.

If you or your parents have any concerns or queries regarding your move to the school, please do not hesitate to email: [info@ashhillacademy.org.uk](mailto:info@ashhillacademy.org.uk) which we will forward on for you to the appropriate member of staff. We look forward to working with you to ensure your success throughout this next phase in your education.

Yours faithfully

Mr Hicks

Principal

# LEARNING MANAGER

Welcome to Ash Hill Academy.

Each year group has their own **Learning Manager**.

**Mrs Smethurst** is the Learning Manager for Year 7.

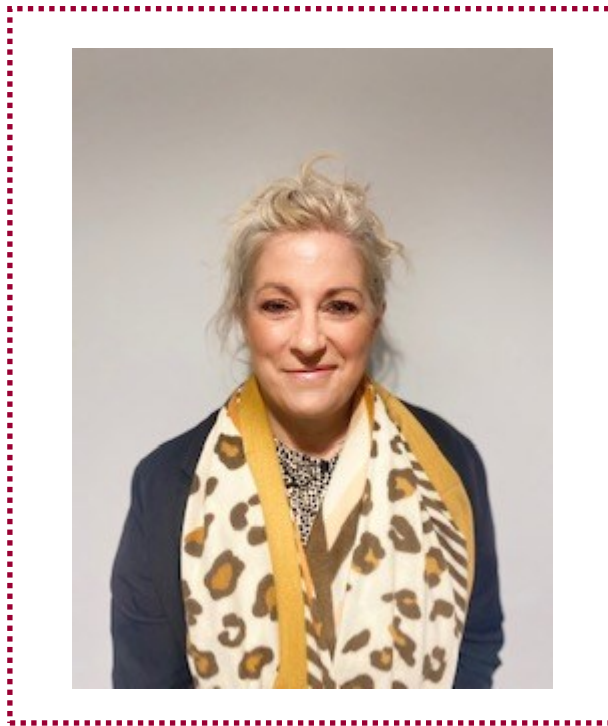
You should look for Mrs Smethurst if you need any kind of support.

**For example:**

If you need to speak to anyone about something important.

If something is worrying you.

If you are struggling with work .



**Mrs Smethurst**

# TIMES OF THE DAY

School starts at 08:25 and ends at 14:30

Your first lessons begin at 08:25

So you should be in the Academy by 08:20 at the latest.

## TIME

08:25-09:25

09:25-10:25

10:25-10:40

10:45-11:00

11:00-12:00

12:00-12:30

12:30-13:00

13:00-13:30

13:30-14:30

14:30-15:30

## PERIOD

Period 1

Period 2

First Break

Second Break

Period 3

Period 4a

Lunch

Period 4b

Period 5

Enrichment

# EXAMPLE TIMETABLE

You will be given a copy of your timetable to put into your planner on your first day.

- **days** are across the top of your timetable
- **Periods / lesson** is down the side of the timetable.

<b>Timetable - Sample Year 7</b>					
as at 06/09/22					
	<b>Mon</b>	<b>Tue</b>	<b>Wed</b>	<b>Thu</b>	<b>Fri</b>
<b>1</b>	08:25 SC7 Ep GTA 7x/Ep2	08:25 HU6 Hi LAN 7x/Hi2	08:25 EN6 En LAK 7x/En2	08:25 Dt3 Dt SCO 7x/Dt2	08:25 SC7 Sc GTA 7x/Sc2
<b>2</b>	09:25 SC7 Sc GTA 7x/Sc2	09:25 MA3 Ma LOT 7x/Ma2	09:25 HU4 Gg LJA 7x/Gg2	09:25 Dt3 Dt SCO 7x/Dt2	09:25 Ar1 Ar SHA 7x/Ar2
<b>B1</b>	10:25 EN2 Tu MCO 7F	10:25 EN2 Tu MCO 7F	10:25 EN2 Tu MCO 7F	10:25 EN2 Tu MCO 7F	10:25 EN2 Tu MCO 7F
<b>B2</b>					
<b>3</b>	11:00 EN2 En MCO 7x/En2	11:00 EN4 En AWA 7x/En2	11:00 MA3 Ma LOT 7x/Ma2	11:00 HU5 Gg NTI 7x/Gg2	11:00 MA3 Ma LOT 7x/Ma2
<b>4</b>	12:00 MA3 Ma LOT 7x/Ma2	12:00 DR1 Pa MCO 7x/Pa2	12:00 HU3 Sc NMA 7x/Sc2	12:00 IT6 Cm JUN 7x/Cm2	12:00 Pe DWH 7x/Pe1
<b>5</b>	13:30 MFL1 Fr EDE 7x/Fr2	13:30 MFL1 Fr EDE 7x/Fr2	13:30 Pe DWH 7x/Pe1	13:30 HU6 Hi LAN 7x/Hi2	13:30 EN6 En LAK 7x/En2

# CORE VALUES

## The Ash Hill Academy prides itself on being:

- An Academy with high standards and expectations, where all students enjoy their learning and achieve to the best of their ability, giving them the skills to take them forward into the world of work.
- The forefront of developing lively and enquiring minds, enabling students to become confident and ambitious.
- A highly inclusive Academy by working in partnership with local agencies and supporting a personalised curriculum for all students.
- An Academy where courtesy, collaboration, enterprise and initiative are paramount.
- An innovative and energising environment for both students and staff.
- At the centre of our community, its service to others and promoting community cohesion.

**CHANGING LIVES  
THROUGH BELIEF  
AND COLLABORATION.**

**KNOWING STUFF IS  
BETTER THAN NOT  
KNOWING STUFF.**

# TEACHING AND LEARNING

## ASPIRE & CHALLENGE

Lessons have an expected outcome (Challenge) and a more complex, demanding outcome (Aspire). These are what students are going to learn in terms of a knowledge or a skill and helps to assess student progress.

## COLLABORATIVE LEARNING

Classes, where appropriate, sit in mixed ability groups of 4. Lessons are designed to enable all students to be actively involved in a variety of tasks that will challenge them. Students are expected to work positively with each other, encouraging learning.

## QUESTIONING

Students should not put their hands up to answer questions. Instead, the teacher will decide who answers questions by targeting a wide variety of students throughout the lesson at random. This is a fair system and ensures students are alert at all times.

## HANDS UP

Whilst students don't raise their hands to answer questions, they will raise their hands when they are expected to be silent and focused on the teacher. When teachers require silence and focus from the whole class they will raise their arm. Students will copy until everyone has followed this.

# PROUD

We use the acronym PROUD to symbolise how we expect pupils to present their work within their books. Pupils taking pride in their work ensures the pupils have high expectations of themselves. Teachers will indicate the letter in which you need to improve within your work.

- Pen** - using an appropriate pen for writing
- Ruler** - Underlining titles or using for drawings
- Oops** - looking for mistakes
- Underline** - underlining titles
- Draw** - using a pencil for drawing



# STUDENT PLANNERS

## Passport to Learning

On your first day you will be given a student planner which you must keep with you at all times during the academic year. Your planner is your **'PASSPORT'** and you must carry your planner with you **EVERY DAY**.

Your planner contains useful information as well as a diary which you can use to keep track of your homework, enrichments, Above and Beyond, detentions and pledges.

It contains details of when school holidays and bank holidays are and term times.

It contains coloured pages which are used in every lesson to support your learning and to ask for help.

It contains other information which you may need for lessons i.e period table for science lessons, formulas for maths lessons.

Your parent/carer can write in your planner to communicate with staff at the academy.



# ATTENDANCE

**You should always aim to get 100% attendance every year**

If you are absent from the Academy your parents/carers must contact the Attendance Department as soon as possible to let us know the reason why.

If we have not received contact from your parents/carers by 9:30 the Academy will contact your parents/carers by telephone or text to ask where you are. If we cannot make contact, we may make a home visit.

If you are late to the Academy you must sign in at Student Reception. You will be given a detention which must be completed on the same day late mark and receive a detention which must be completed on the same day.

# 100%



# ATTENDANCE AND PUNCTUALITY

Research shows that students with the highest attendance are the students who tend to achieve the best results and benefit the most from education and related opportunities.

DO YOU THINK  
95% ATTENDANCE  
IS GOOD?  
THINK AGAIN!  
YOU WILL HAVE MISSED  
**57 LESSONS**



## WHAT YOUR ATTENDANCE MEANS



- **95% = 57**  
LESSONS MISSED
- **90% = 114**  
LESSONS MISSED
- **80% = 228**  
LESSONS MISSED

# PLEDGES

Pledges are all about developing you as a person and allowing you to gain rounded experiences in and out of the Academy.



These include: regular attendance at an Enrichment activity, representing the Academy in sports, cultural or academic events, taking part in productions and presentations, being an active member of Student Voice and participating in fundraising events.

Every time you achieve a Pledge, this is signed and dated in your pledge record.



**3 pledges**  
is your passport to  
Year 9 Graduation

**7 pledges**  
is your passport to  
Year 11 Prom

**10 pledges**  
is your passport to  
a rewarding future  
career

# ABOVE AND BEYOND

**This is an acknowledgement of someone going 'above and beyond' the expectation of their learning environment**



Stickers are issued to reward your effort in lessons.  
You can collect these from all departments and around school.

## RECOGNITION

You will be rewarded for your achievements in many different ways.



- Trips
- Movie and Pizza Afternoons
- Invitation to 'Brunch with the Principal'
- Free Breakfasts, Easter Eggs
- Above and Beyond

*... and many other celebration events through the year*

**Be  
Proud  
Of  
Your  
Achievements**

# HOME LEARNING

**You are expected to complete one hour of home learning each weekday.**



## **Sparx MATHS**

Each student is set weekly homework which is instantly marked and this is then fed back to their Maths teacher. Pupils are encouraged to reattempt all homework's until they have achieved 100% and then work on any other tasks they feel they need.

## **READING**

Reading is the key to unlocking success in all subjects. We believe that all students and staff should regularly read for their own pleasure. For every book students read, they take an Accelerated Reader test which monitors their understanding and reading age. This test can be done at home and in the Academy's Learning Resource Centre.

## **KNOWLEDGE ORGANISER**

The Knowledge Organisers provide students with all of the key information they need to make great progress in their subjects. Knowledge Organisers are expected to be studied every weeknight, with notes made in the exercise book. Knowledge Organisers are also used in lessons, where students will be quizzed on the information they contain as well as being able to use them as support material when they need a reminder. They really are essential to every student's progress.

**Students are issued with Above and Beyond stickers for outstanding work completed and celebrate this through #ProudThursday—follow us on twitter @ashillacademy to see the amazing work of our pupils.**

## TERM & HOLIDAY DATES

Staff Training Day	Monday 4 <sup>th</sup> September 2023
Term starts for all students	Tuesday 5 <sup>th</sup> September 2023
Academy closes	Friday 20 <sup>th</sup> October 2023
Academy reopens	Monday 30 <sup>th</sup> October 2023
Academy closes	Thursday 21 <sup>st</sup> December 2023
Staff Training Day	Friday 22 <sup>nd</sup> December 2023
Academy re-opens	Monday 8 <sup>th</sup> January 2024
Academy closes	Friday 9 <sup>th</sup> February 2024
Staff Training Day	Monday 19 <sup>th</sup> February 2024
Academy re-opens	Tuesday 20 <sup>th</sup> February 2024
Academy closes	Thursday 28 <sup>th</sup> March 2024
Academy re-opens	Monday 15 <sup>th</sup> April 2024
Bank Holiday	Monday 6 <sup>th</sup> May 2024
Academy closes	Friday 24 <sup>th</sup> May 2024
Academy re-opens	Monday 3 <sup>rd</sup> June 2024
Academy closes	Friday 19 <sup>th</sup> July 2024
Staff Training Day	Monday 22 <sup>nd</sup> July 2024
	Tuesday 23 <sup>rd</sup> July 2024

# STUDENT LEADERS

The Student Leadership programme is run entirely by students, for students. The agenda is set by its members. Each meeting is chaired by senior students of the Council and minutes are ratified before being handed to the Principal.

Scheduled meetings are put in place so that each Assistant Principal is held accountable for their respective strategies for improvement.

These areas are: Student Achievement, Student Learning, Student Wellbeing and Student Community Action.

The student leadership programme is for any student who wishes to represent the school and has a solution based approach to school issues. It is open to any member of Ash Hill Academy who is willing to put themselves through the rigorous application process.

**Main roles within the student leadership team include:**

**PRESIDENT**  
**VICE PRESIDENT**  
**FUNDRAISING TEAM**  
**ANTI-BULLYING AMBASSADORS**  
**STUDENT LIBRARIANS**  
**TRANSITION LEADERS**  
**NUMERACY LEADERS**  
**LITERACY LEADERS**  
**SPORTS LEADERS**  
**REPRESENTATIVES FROM EACH YEAR**  
**GROUP**





# COMPULSORY ACADEMY UNIFORM



## Delta Tie

**Plain White shirt/blouse with collar** (top button must be fastened and tucked in, long or short sleeved)

**Black Tailored Trousers or Skirt** (worn with tights)

**Flat, plain black shoes** (No logos, no heels, no pumps/trainers/boots and no embellishments e.g. Bows)

**Black socks or black tights**

**A school bag** (big enough to fit an A4 sized folder)

# PE KIT



**Delta Polo Shirt**

**Delta PE shorts**

**Delta reversible outdoor games top**

**Plain black knee length socks**

**Appropriate trainers / football boots**

# OPTIONAL UNIFORM



**Black V Neck Knitted Jumper** (Worn with Academy Blazer, not as a substitute, must not be a hoodie or sweatshirt)

**Plain Black belt** (no large buckles)

# KEEPING UP APPEARANCES



**Make-up** is not permitted

**Jewellery of any kind** is not permitted

**A digital or analogue watch** is permitted (No smart watches)

**Varnished/gel/acrylic/false nails** are not permitted

## Hair:

Only natural colours permitted.

Short cuts below a grade two are not permitted.

Shaved patterns are not permitted

**Mobile phones, MP3's, iPods and video game devices** are not permitted in the Academy.



# GET YOURSELF EQUIPPED

## The equipment you will need:

The Ash Hill planner  
A bag large enough to fit an A4 folder  
Blue or black pens  
Red pen  
Pencils  
Ruler  
Reading book  
Calculator (Casio Model)

## Other optional equipment may include

Pencil sharpener, Eraser, coloured pens, highlighters...



# EATING AND DRINKING



**All food and drink must be consumed in the dining hall only**—Students must be seated at all times within the dining hall.

**Generation Juice**— we run a sustainable drinks machine with all students provided with their own water bottle to reduce plastic waste.

**Water may be permitted in traditional teaching rooms**  
(not in library, computer rooms or science Labs)

**Chewing Gum and fizzy drinks** /energy drinks are not permitted anywhere on the Academy grounds.

**Students will have the opportunity to have a nutritious breakfast before beginning the school day.**



# Menu Week One

	Monday	Tuesday	Wednesday	Thursday	Friday
<b>Main Meal (Meat)</b>	Southern Fried Chicken	Homemade Chicken Tikka Masala	Fresh Roast Loin of Pork and Yorkshire Pudding	Winter Warmer Beef Stew and Dumpling	Fresh Beef Burger in a Bun
<b>Main Meal (Vegetarian)</b>	Guom Vegan Dippers	Homemade Vegetable Tikka Masala	Roast Guom Fillet	Winter Warmer Vegetable Stew	Guom Nuggets
<b>Freshly Baked Jacket Potatoes</b>	Tuna Mayo Grated Cheddar Cheese Coleslaw Baked Beans Chef's Choice of the Day	Tuna Mayo Grated Cheddar Cheese Coleslaw Baked Beans Chef's Choice of the Day	Tuna Mayo Grated Cheddar Cheese Coleslaw Baked Beans Chef's Choice of the Day	Tuna Mayo Grated Cheddar Cheese Coleslaw Baked Beans Chef's Choice of the Day	Tuna Mayo Grated Cheddar Cheese Coleslaw Baked Beans Chef's Choice of the Day
<b>Daily Vegetables</b>	Mixed Salad	Seasonal Selection	Seasonal Selection	Seasonal Selection	Mixed Salad
<b>Daily Carbohydrates</b>	Chips	50/50 Rice Naan Bread	Roast Potatoes	Mashed Potato	Seasoned Potato Wedges
<b>Daily Pasta</b>	Pasta Pot With Daily Sauce Selection	Pasta Pot with Daily Sauce Selection	Pasta Pot With Daily Sauce Selection	Pasta Pot With Daily Sauce Selection	Pasta Pot With Daily Sauce Selection
<b>Grab &amp; Go</b>	Fresh Homemade Daily Selection of Paninis, Wraps, Baps, Sub Roll & Sandwiches	Fresh Homemade Daily Selection of Paninis, Wraps, Baps, Sub Roll & Sandwiches	Fresh Homemade Daily Selection of Paninis, Wraps, Baps, Sub Roll & Sandwiches	Fresh Homemade Daily Selection of Paninis, Wraps, Baps, Sub Roll & Sandwiches	Fresh Homemade Daily Selection of Paninis, Wraps, Baps, Sub Roll & Sandwiches
<b>Dessert of the Day</b>	Homemade Fresh Fruit Salad	Frozen Toffee Yoghurt Pot	Homemade Apple Crumble, served with Custard	Strawberry Ice Cream Pot	Homemade Pear and Apple Sponge, Served with Custard
<b>Home Bakes</b>	Homemade Flapjack Homemade Chocolate Brownie Homemade Chef's Choice of the Day	Homemade Flapjack Homemade Chocolate Brownie Homemade Chef's Choice of the Day	Homemade Flapjack Homemade Chocolate Brownie Homemade Chef's Choice of the Day	Homemade Flapjack Homemade Chocolate Brownie Homemade Chef's Choice of the Day	Homemade Flapjack Homemade Chocolate Brownie Homemade Chef's Choice of the Day
<b>Fruit Selection</b>	Seasonal Selection	Seasonal Selection	Seasonal Selection	Seasonal Selection	Seasonal Selection
<b>Yoghurts</b>	Daily Variety of Flavours	Daily Variety of Flavours	Daily Variety of Flavours	Daily Variety of Flavours	Daily Variety of Flavours

# ENRICHMENT ACTIVITIES

**Football**

**Food Club**

**Netball**

**Badminton**

**Rugby**

**Science Club**

**MFL Club**

**Chess & Games Club**

**LGBTQ+ Club**

**Art Club**

**History Club**

**Literacy**

**Numeracy**

**Drama Club**

**Music Club**

**Homework Club**





# NOTES

A series of horizontal dotted lines for writing notes.





The Laurel Academy  
Maple Road  
Mexborough  
S64 9SD

Telephone: 01709 302244  
Website: [www.laurelacademy.org.uk](http://www.laurelacademy.org.uk)  
Email: [info@laurelacademy.org.uk](mailto:info@laurelacademy.org.uk)  
Twitter: @DeltaTheLaurel

